

Path to BSW Field Placement

BSW Scholars, this infographic outlines the path to field placement during your final two semesters (Fall/Spring) in the Social Work Program at Coppin State University. Please keep in mind the following: 1) the process occurs in the Spring and Summer semesters before your field placement begins and 2) field placements start only in the Fall semester.



Social Work Major

Students must be a Social Work Major and about to enter their final academic school year.

START

Field Documents

The Field Director will invite eligible students to submit their field application and resume by March 31st prior to Fall semester field start date.



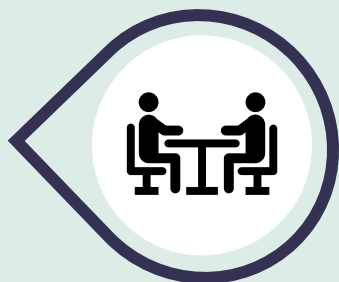
Prerequisites

Students must have a minimum 2.50 GPA & have completed the following SOWK courses: 210, 260, 379, & 388.



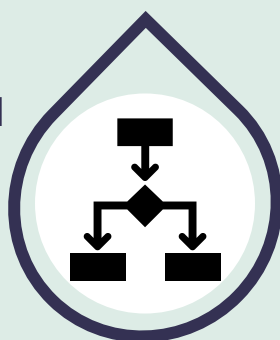
Interest Meeting & Mock Interview

Students must attend a Field Interest Meeting and complete their mock interview in the Spring semester prior to the Fall semester field start date.



Agency Referral

During the Spring semester, the Field Director will begin the process of referring students to a placement agency for an interview. This process can extend into the Summer. Students are referred to one agency at a time. Additional referrals based on interview outcome.



Placement Confirmed

Once the field placement is confirmed, the agency's onboarding process begins in preparation for the Fall semester field start date.

FINISH



COPPIN
STATE UNIVERSITY

EST. 1900

**College of Behavioral and Social Sciences
Department of Social Work
Office of Field Education**

For additional information, contact the Field Office at socialworkfieldeducation@coppin.edu or visit our [website](#).